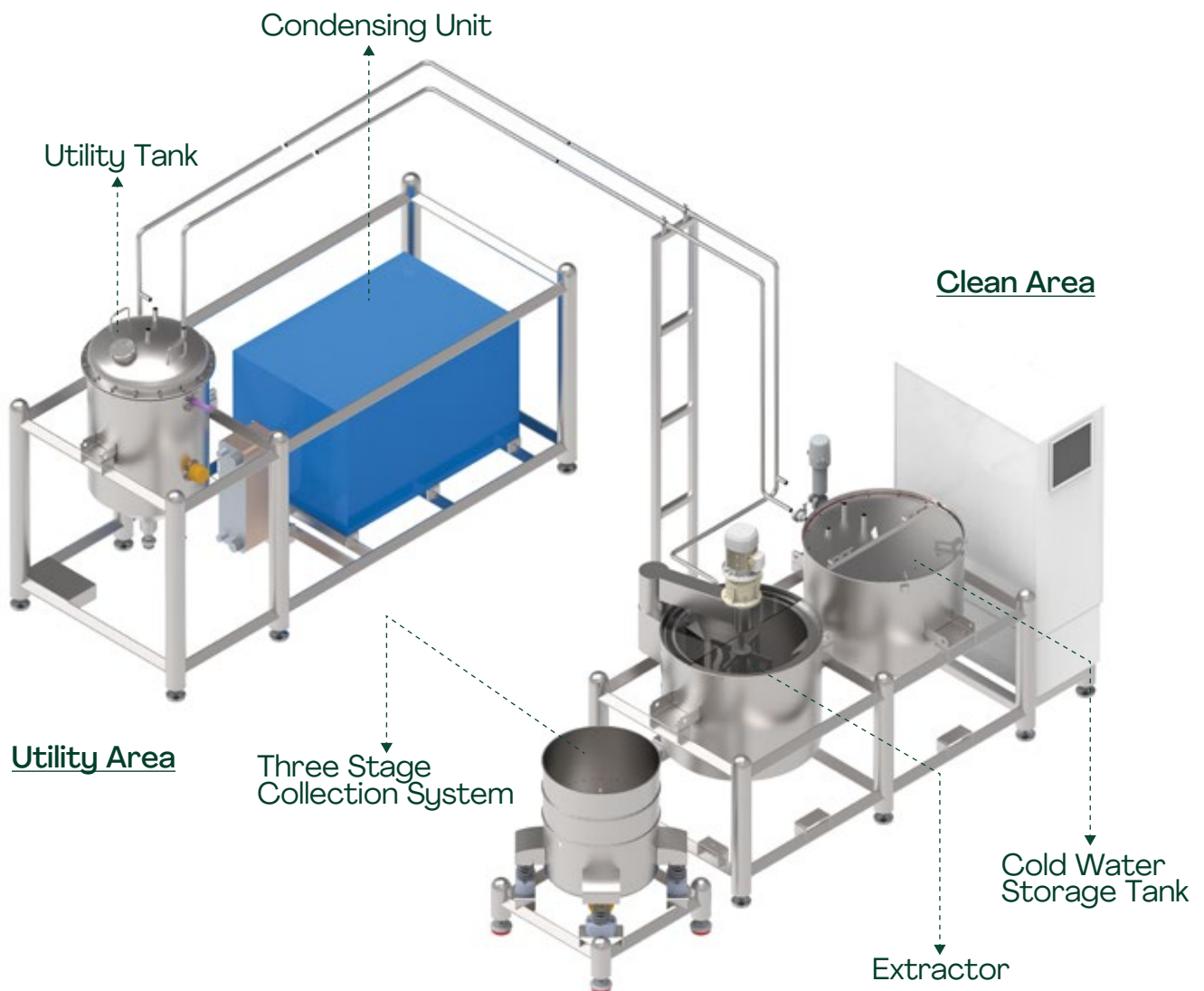


NORDEX 50M - COLD WATER EXTRACTION SYSTEM



SYSTEM OVERVIEW

TECHNICAL HIGHLIGHTS

- Power: 18 kW
- Area Foot Print (L x W x H):
3.23 m x 4.34 m x 2.46 m
- Floor Load Bearing Capacity: 2 KN/m²
- Compressed Air: 5 cfm @6 barg



Semi-Automated



Run with one operator



Ice not required



Customizable mesh size

SYSTEM FEATURES



Processing Capacity

Can process up to 2-3 kg of fresh frozen flower



Built for Multiple Washes

Allows multiple washes for same batch of flower



Variable RPM

Enables adjustable speed with whirlpool technology



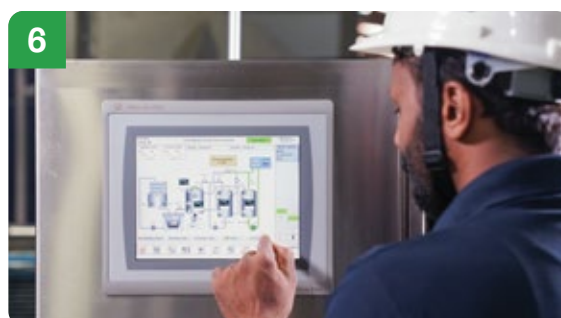
Three Stage Collection System

Provides 3-stage filtration ranging from 250 microns to 40 microns



Temperature Consistency

Maintains temperature and control with temperature sensors and cooling coils



Intuitive Intelligence

User friendly touchscreen operation

TECHNICAL SPECIFICATIONS

Extractor (EX)

- Volume: 60 Liters
- Max Operating Pressure: Atm
- Max Operating Temperature: 40 °C
- Min Operating Temperature: 0 °C
- Type of Construction: Hollow Shell with Agitator and Insulation
- MOC (contact/non-contact): SS316/SS304
- Surface Finish - contact: Ra 1.8 (Mirror finish)
- Surface Finish - non-contact: Ra 3.2 (Glass bead finish)
- Certification: cGMP or EU GMP compliance
- Sensors: Level/Temperature at Inlet & Outlet
- Safety: Limit Switches
- Make: Cybernetik

Cold Water Tank

- Volume: 120 Liters
- Max Operating Pressure: Atm
- Max Operating Temperature: 40 °C
- Min Operating Temperature: 0 °C
- Type of Construction: Hollow Shell with Insulation
- MOC (contact/non-contact): SS316/SS304
- Surface Finish - contact: Ra 1.8 (Mirror finish)
- Surface Finish - non-contact: Ra 3.2 (Glass bead finish)
- Certification: cGMP or EU GMP compliance
- Sensors: Level/Temperature at Inlet & Outlet
- Make: Cybernetik

Three Stage Collection System

- Diameter: 600 mm
- Filtration Area: 0.85 m²
- 1st Stage Filtration: 250 microns
- 2nd Stage Filtration: 160 microns
- 3rd Stage Filtration: 73 microns (Customized - as per client)
- Type of Construction: Hollow shell with sieves
- MOC (contact/non-contact): SS316/SS304
- Certification: cGMP or EU GMP compliance
- Surface Finish - contact: Ra 1.8 (Mirror finish)
- Surface Finish - non-contact: Ra 3.2 (Glass bead finish)
- Make: Cybernetik

Chiller Unit (Condenser + Glycol Tank)

- Volume: 150 Liters
- Operating Pressure: Atm
- Operating Temperature: 0-2 °C
- Type of Construction: Hollow Shell With Insulation
- MOC (contact/non-contact): SS304
- Surface Finish - contact: Ra 1.8 (Mirror finish)
- Surface Finish - non-contact: Ra 3.2 (Glass bead finish)
- Certification: NA
- Sensors: RTD
- Make: Cybernetik
- Condenser: 3 TR
- Make: Danfoss/Emerson

Recipe Management/Data Logging (RE)

- Data monitoring and control: SCADA with unlimited tags
- Save Settings: Data bank for mutiple settings
- Frequency drives: Rockwell

Salient Features

- Semi-automated with one operator
- Completely reusable water system (Manual)
- 3 stage product collection system (Customizable)
- cGMP or EU GMP compliance
- HMI for Semi-Automatic or Manual operation

INSTALLATION & SUPPORT

- 1 Year consumables include Seals, Fittings, Ball valves included in price

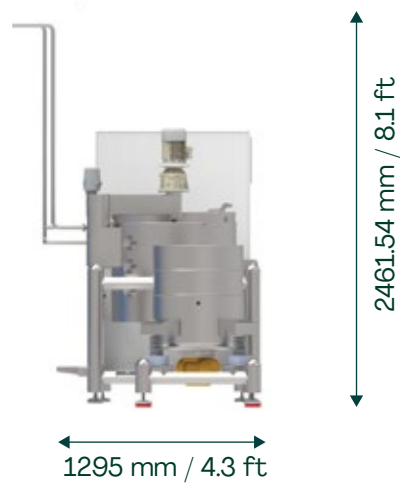
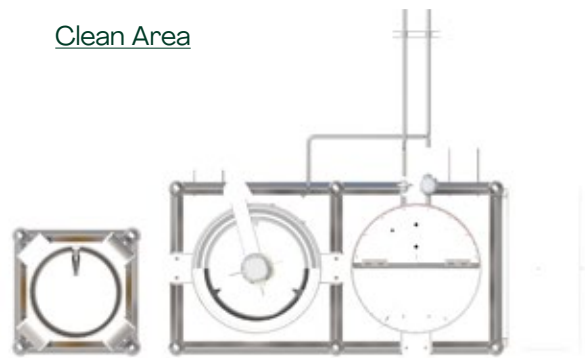
WARRANTY

- 1 Year machine warranty

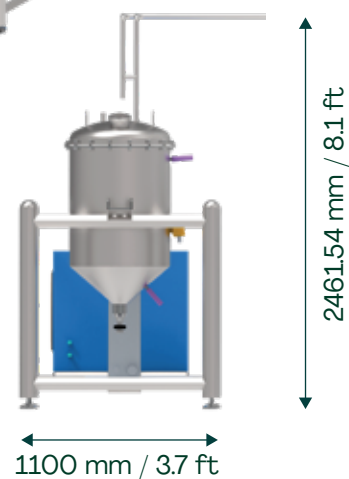
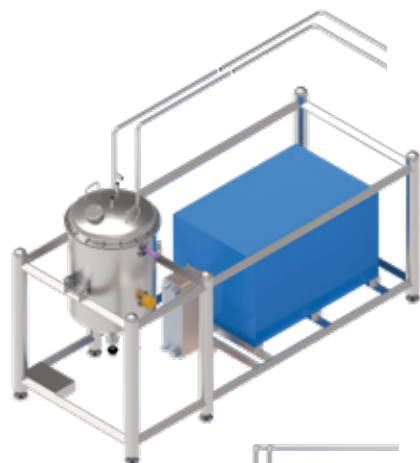
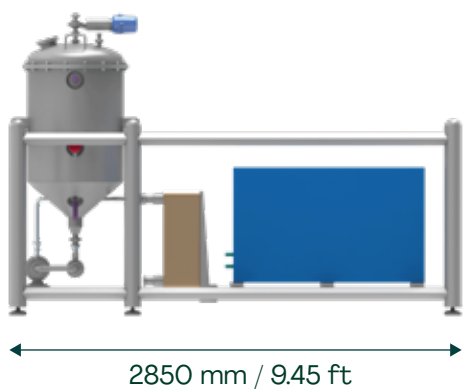
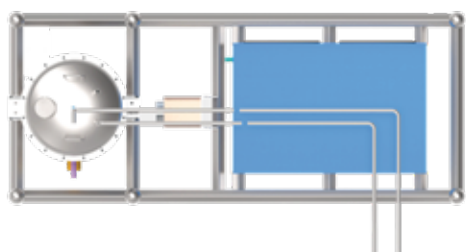
AVAILABLE CERTIFICATIONS



Clean Area



Utility Area



EXPERIENCE
EXTRACTION AT
ITS FINEST.



Founded in Bentonville, Arkansas, USA, Buffalo Extraction Systems is a turnkey solutions provider in the extraction space. We are led by a young, dynamic group of technocrats offering state of the art extraction solutions for Hemp, Cannabis, Bio-products and Nutraceuticals industries across geographies. We have in-house manufacturing for large scale Convection Drying, Cryogenic Ethanol Extraction, Cold Water Extraction and Supercritical Fluid Extraction (CO₂ SCFE) Systems.

Our Turnkey Solutions

Supercritical Fluid Extraction (CO₂ SCFE) System

Cryogenic Ethanol Extraction System

Conveyorized Biomass Sorting, Drying & Milling

Continuous Winterization System

Nordex 100 - Cold Water Extraction System

GMP Design Engineering



Our Global Extraction Hubs

- 1 BES Labs IN
- 2 CIMAP IN
- 3 CSIR SA
- 4 World Horti Center NL

Contact Us

☎ +91 86013 75715

✉ info@buffaloextracts.com

🌐 buffaloextracts.com

